



# Certificate of Analysis

Powered by Confident Cannabis

Naked Leaf LLC

Boulder, CO 80301  
 nathan@nakedleaf.com  
 (743) 226-5700  
 Lic. #CBD

Sample: 1911DBL0282.11187

METRC Sample:  
 Lot #: 1106440P

Strain: NA  
 Ordered: 11/20/2019; Sampled: 11/22/2019; Completed: 12/04/2019

## Naked leaf Tincture 450MG

Ingestible, Tincture



Pesticides



Microbials



Mycotoxins



Heavy Metals



Foreign Matter



Solvents

### Terpenes

Analyzed by 300.13 GC/FID and GC/MS



1.444 mg/g  
 Total Terpenes

Compound	LOQ	Mass	Mass	Relative Concentration
	mg/g	mg/g	%	
Eucalyptol	0.091	0.546	0.0546	<div style="width: 50%;"></div>
δ-Limonene	0.091	0.306	0.0306	<div style="width: 30%;"></div>
Isopulegol	0.091	0.196	0.0196	<div style="width: 15%;"></div>
β-Pinene	0.091	0.163	0.0163	<div style="width: 10%;"></div>
α-Pinene	0.091	0.125	0.0125	<div style="width: 8%;"></div>
β-Caryophyllene	0.091	0.108	0.0108	<div style="width: 7%;"></div>
α-Bisabolol	0.091	<LOQ	<LOQ	
α-Humulene	0.091	<LOQ	<LOQ	
α-Terpinene	0.091	<LOQ	<LOQ	
β-Myrcene	0.091	<LOQ	<LOQ	
Camphene	0.091	<LOQ	<LOQ	
Caryophyllene Oxide	0.091	<LOQ	<LOQ	
cis-Nerolidol	0.059	<LOQ	<LOQ	
cis-Ocimene	0.059	<LOQ	<LOQ	
δ-3-Carene	0.091	<LOQ	<LOQ	
γ-Terpinene	0.091	<LOQ	<LOQ	
Guaiol	0.091	<LOQ	<LOQ	
Linalool	0.091	<LOQ	<LOQ	
p-Cymene	0.091	<LOQ	<LOQ	
Terpinolene	0.091	<LOQ	<LOQ	
trans-Nerolidol	0.032	<LOQ	<LOQ	
trans-Ocimene	0.032	<LOQ	<LOQ	

### Cannabinoid Relative Concentration

Analyzed by 300.18 UHPLC/PDA

Pass

<LOQ  
 Δ9-THC + Δ8-THC

28.194 mg/g  
 CBD

pH: NT  
 Aw: 0.26

28.839 mg/g  
 Total Cannabinoids

Not Tested  
 Homogeneity

Compound	LOQ	Mass	Mass	Relative Concentration
	mg/g	mg/g	%	
CBC	0.059	<LOQ	<LOQ	
CBCa	0.059	<LOQ	<LOQ	
CBD	0.059	28.194	28.194	<div style="width: 100%;"></div>
CBDa	0.059	<LOQ	<LOQ	
CBDV	0.059	0.645	0.0645	<div style="width: 2%;"></div>
CBDVa	0.059	<LOQ	<LOQ	
CBG	0.059	<LOQ	<LOQ	
CBGa	0.059	<LOQ	<LOQ	
CBL	0.059	<LOQ	<LOQ	
CBN	0.059	<LOQ	<LOQ	
Δ8-THC	0.059	<LOQ	<LOQ	
Δ9-THC	0.059	<LOQ	<LOQ	
THCa	0.059	<LOQ	<LOQ	
THCV	0.059	<LOQ	<LOQ	
THCVa	0.059	<LOQ	<LOQ	

Total THC = 0.877 x THC-A + Δ9-THC + Δ8-THC; Total CBD = CBDa \* 0.877 + CBD



*Stacy Gardalen*

Stacy Gardalen  
 Quality Control

*Kelly Zaugg*

Kelly Zaugg  
 Quality Control



4439 Polaris Ave  
 Las Vegas, NV  
 (702) 728-5180

www.dblabslv.com

This report is considered highly confidential and the sole property of the customer. DB Labs will not discuss any part of this study with personnel other than those authorized by the client. The results described in this report only apply to the samples analyzed. The reported result is based on a sample weight with the applicable moisture content for that sample. LOQ = Limit of Quantitation. Pesticide LOQ = Instrument Limit of Quantitation, NA = Not Analyzed. ND = Not Detected. NR = Not Reported. NT = Not Tested. PGR = Plant Growth Regulator. Unless otherwise stated all quality control samples performed within specifications established by the Laboratory. This product has been tested by DB Labs, LLC (MME# 61887736101164525768) using valid testing methodologies and a quality system as required by Nevada state law. Edibles are picked up prior to final packaging unless otherwise stated. Values reported relate only to the product tested. The uncertainty of measurement associated with the measurement result reported in this certificate is available from the organization upon request. DB Labs makes no claims as to the efficacy, safety or other risks associated with any detected or non-detected levels of any compounds reported herein. This Certificate shall not be reproduced except in full, without the written approval of DB Labs.



# Certificate of Analysis

Powered by Confident Cannabis

**Naked Leaf LLC**

Boulder, CO 80301  
 nathan@nakedleaf.com  
 (743) 226-5700  
 Lic. #CBD

**Sample: 1911DBL0282.11187**

METRC Sample:  
 Lot #: 1106440P

Strain: NA  
 Ordered: 11/20/2019; Sampled: 11/22/2019; Completed: 12/04/2019

## Naked leaf Tincture 450MG

Ingestible, Tincture



Pesticides				
Analyzed by 300.9 LC/MS/MS and GC/MS/MS				
Compound	LOQ	Limit	Mass	Status
	PPB	PPB	PPB	
Abamectin	10	200	<LOQ	Pass
Acequinocyl	10	4000	<LOQ	Pass
Bifenazate	10	400	<LOQ	Pass
Bifenthrin	10	100	<LOQ	Pass
Cyfluthrin	10	2000	<LOQ	Pass
Cypermethrin	10	1000	<LOQ	Pass
Daminozide	10	800	<LOQ	Pass
Dimethomorph	10	2000	<LOQ	Pass
Etoazole	10	400	<LOQ	Pass
Fenhexamid	10	1000	<LOQ	Pass
Flonicamid	10	1000	<LOQ	Pass
Fludioxonil	10	500	<LOQ	Pass
Imidacloprid	10	500	<LOQ	Pass
Myclobutanil	10	400	<LOQ	Pass
Paclobutrazol	10	400	<LOQ	Pass
Piperonyl Butoxide	10	3000	<LOQ	Pass
Pyrethrins	10	2000	<LOQ	Pass
Quintozene	10	800	<LOQ	Pass
Spinetoram	10	1000	<LOQ	Pass
Spinosad	10	1000	<LOQ	Pass
Spirotetramat	10	1000	<LOQ	Pass
Thiamethoxam	10	400	<LOQ	Pass
Trifloxystrobin	10	1000	<LOQ	Pass
Plant Growth Regulators	10	50	<LOQ	Pass

Microbials				
Analyzed by 300.1 Plating/QPCR				
Quantitative Analysis	LOQ	Limit	Mass	Status
	CFU/g	CFU/g	CFU/g	
Aerobic Bacteria	1000	100000	<LOQ	Pass
Bile-Tolerant Gram-Negative Bacteria	100	1000	<LOQ	Pass

Qualitative Analysis	Detected or Not Detected	Status
E. Coli	Not Detected	Pass
Salmonella	Not Detected	Pass

Mycotoxins				
Analyzed by 300.2 Elisa				
Mycotoxin	LOQ	Limit	Mass	Status
	PPB	PPB	PPB	
Aflatoxins	4.0	20.0	<LOQ	Pass
Ochratoxin A	2.0	20.0	<LOQ	Pass

Heavy Metals				
Analyzed by 300.8 ICP/MS				
Element	LOQ	Limit	Mass	Status
	PPB	PPB	PPB	
Arsenic	36	2000	<LOQ	Pass
Cadmium	36	820	<LOQ	Pass
Lead	36	1200	112	Pass
Mercury	36	400	<LOQ	Pass

Residual Solvents				
Analyzed by 300.13 GC/FID and GC/MS				
Compound	LOQ	Limit	Mass	Status
	PPM	PPM	PPM	
Butanes	58	500	<LOQ	Pass
Heptanes	58	500	<LOQ	Pass
Propane	58	500	<LOQ	Pass



*Stacy Gardalen*  
 Stacy Gardalen  
 Quality Control

*Kelly Zaugg*  
 Kelly Zaugg  
 Quality Control



4439 Polaris Ave  
 Las Vegas, NV  
 (702) 728-5180  
 www.dblabslv.com

This report is considered highly confidential and the sole property of the customer. DB Labs will not discuss any part of this study with personnel other than those authorized by the client. The results described in this report only apply to the samples analyzed. The reported result is based on a sample weight with the applicable moisture content for that sample. LOQ = Limit of Quantitation. Pesticide LOQ = Instrument Limit of Quantitation, NA = Not Analyzed, ND = Not Detected, NR = Not Reported, NT = Not Tested. PGR = Plant Growth Regulator. Unless otherwise stated all quality control samples performed within specifications established by the Laboratory. This product has been tested by DB Labs, LLC (MME# 61887736101164525768) using valid testing methodologies and a quality system as required by Nevada state law. Edibles are picked up prior to final packaging unless otherwise stated. Values reported relate only to the product tested. The uncertainty of measurement associated with the measurement result reported in this certificate is available from the organization upon request. DB Labs makes no claims as to the efficacy, safety or other risks associated with any detected or non-detected levels of any compounds reported herein. This Certificate shall not be reproduced except in full, without the written approval of DB Labs.



# Certificate of Analysis

Powered by Confident Cannabis

Naked Leaf LLC

Boulder, CO 80301  
nathan@nakedleaf.com  
(743) 226-5700  
Lic. #CBD

Sample: 1911DBL0282.11187

METRC Sample:  
Lot #: 1106440P

Strain: NA

Ordered: 11/20/2019; Sampled: 11/22/2019; Completed: 12/04/2019

## Naked leaf Tincture 450MG

Ingestible, Tincture



### Pesticides/Plant Growth Regulators\*

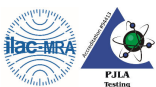
Analyzed by 300.9 LC/MS/MS and GC/MS/MS

Pass

Compound	LOQ	Limit	Mass	Status
	PPB	PPB	PPB	
Abamectin	10	200	<LOQ	Pass
Acequinocyl	10	4000	<LOQ	Pass
Bifenazate	10	400	<LOQ	Pass
Bifenthrin	10	100	<LOQ	Pass
Cyfluthrin	10	2000	<LOQ	Pass
Cypermethrin	10	1000	<LOQ	Pass
Daminozide*	10	800	<LOQ	Pass
Dimethomorph	10	2000	<LOQ	Pass
Etoxazole	10	400	<LOQ	Pass
Fenhexamid	10	1000	<LOQ	Pass
Flonicamid	10	1000	<LOQ	Pass
Fludioxonil	10	500	<LOQ	Pass
Imidacloprid	10	500	<LOQ	Pass
Myclobutanil	10	400	<LOQ	Pass
Paclobutrazol*	10	400	<LOQ	Pass
Piperonyl Butoxide	10	3000	<LOQ	Pass
Plant Growth Regulators	10	50	<LOQ	Pass
Pyrethrins	10	2000	<LOQ	Pass
Quintozene	10	800	<LOQ	Pass
Spinetoram	10	1000	<LOQ	Pass
Spinosad	10	1000	<LOQ	Pass
Spirotetramat	10	1000	<LOQ	Pass
Thiamethoxam	10	400	<LOQ	Pass
Trifloxystrobin	10	1000	<LOQ	Pass



Notes:



*Stacy Gardalen*

Stacy Gardalen  
Quality Control

*Kelly Zaugg*

Kelly Zaugg  
Quality Control



4439 Polaris Ave  
Las Vegas, NV  
(702) 728-5180

www.dblabslv.com

This report is considered highly confidential and the sole property of the customer. DB Labs will not discuss any part of this study with personnel other than those authorized by the client. The results described in this report only apply to the samples analyzed. The reported result is based on a sample weight with the applicable moisture content for that sample. LOQ = Limit of Quantitation. Pesticide LOQ = Instrument Limit of Quantitation, NA = Not Analyzed. ND = Not Detected. NR = Not Reported. NT = Not Tested. PGR = Plant Growth Regulator. Unless otherwise stated all quality control samples performed within specifications established by the Laboratory. This product has been tested by DB Labs, LLC (MME# 61887736101164525768) using valid testing methodologies and a quality system as required by Nevada state law. Edibles are picked up prior to final packaging unless otherwise stated. Values reported relate only to the product tested. The uncertainty of measurement associated with the measurement result reported in this certificate is available from the organization upon request. DB Labs makes no claims as to the efficacy, safety or other risks associated with any detected or non-detected levels of any compounds reported herein. This Certificate shall not be reproduced except in full, without the written approval of DB Labs.



# Certificate of Analysis

Powered by Confident Cannabis

Naked Leaf LLC

Boulder, CO 80301  
nathan@nakedleaf.com  
(743) 226-5700  
Lic. #CBD

Sample: 1911DBL0282.11187

METRC Sample:  
Lot #: 1106440P

Strain: NA

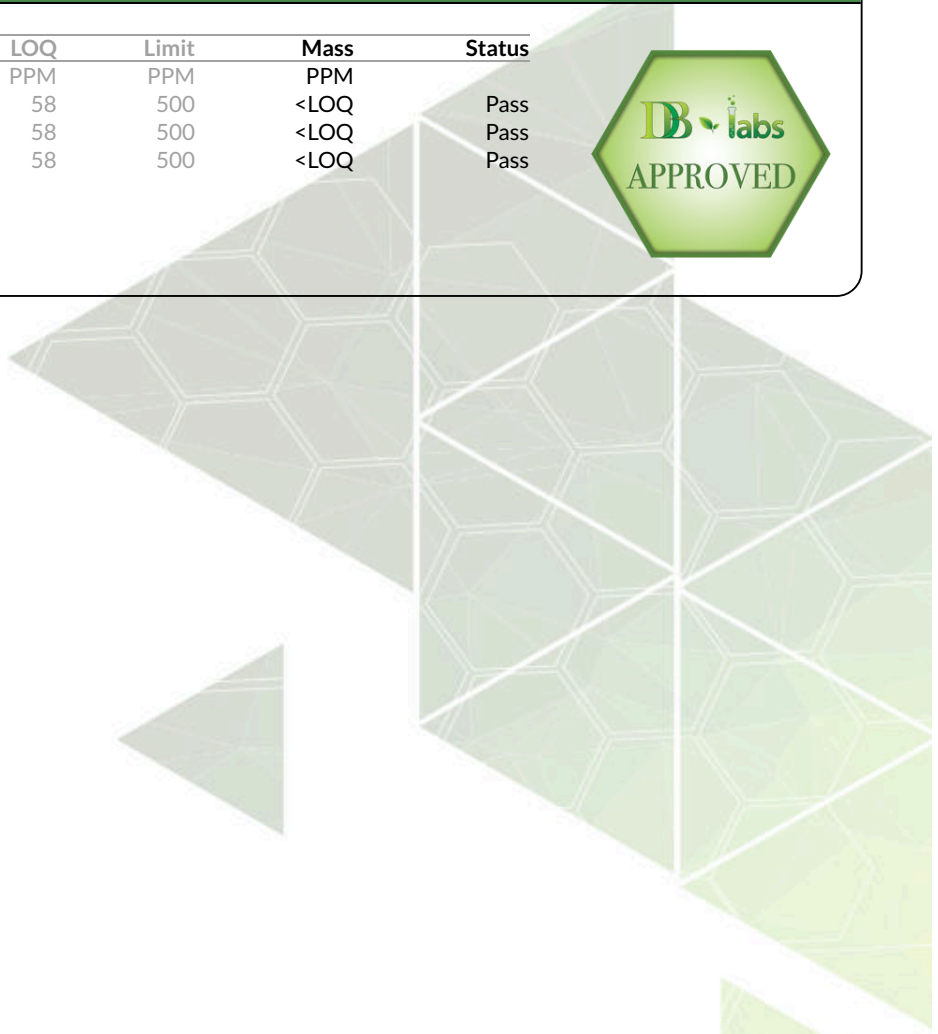
Ordered: 11/20/2019; Sampled: 11/22/2019; Completed: 12/04/2019

## Naked leaf Tincture 450MG

Ingestible, Tincture



Residual Solvents				Pass
Analyzed by 300.13 GC/FID and GC/MS				
Compound	LOQ	Limit	Mass	Status
	PPM	PPM	PPM	
Butanes	58	500	<LOQ	Pass
Heptane	58	500	<LOQ	Pass
Propane	58	500	<LOQ	Pass



Stacy Gardalen  
Quality Control

Kelly Zaugg  
Quality Control



4439 Polaris Ave  
Las Vegas, NV  
(702) 728-5180

www.dblabslv.com

This report is considered highly confidential and the sole property of the customer. DB Labs will not discuss any part of this study with personnel other than those authorized by the client. The results described in this report only apply to the samples analyzed. The reported result is based on a sample weight with the applicable moisture content for that sample. LOQ = Limit of Quantitation. Pesticide LOQ = Instrument Limit of Quantitation, NA = Not Analyzed. ND = Not Detected. NR = Not Reported. NT = Not Tested. PGR = Plant Growth Regulator. Unless otherwise stated all quality control samples performed within specifications established by the Laboratory. This product has been tested by DB Labs, LLC (MME# 61887736101164525768) using valid testing methodologies and a quality system as required by Nevada state law. Edibles are picked up prior to final packaging unless otherwise stated. Values reported relate only to the product tested. The uncertainty of measurement associated with the measurement result reported in this certificate is available from the organization upon request. DB Labs makes no claims as to the efficacy, safety or other risks associated with any detected or non-detected levels of any compounds reported herein. This Certificate shall not be reproduced except in full, without the written approval of DB Labs.





# Certificate of Analysis

Powered by Confident Cannabis

Naked Leaf LLC

Boulder, CO 80301  
nathan@nakedleaf.com  
(743) 226-5700  
Lic. #CBD

Sample: 1911DBL0282.11187

METRC Sample:  
Lot #: 1106440P


Strain: NA  
Ordered: 11/20/2019; Sampled: 11/22/2019; Completed: 12/04/2019

## Naked leaf Tincture 450MG

Ingestible, Tincture



Mycotoxins				Pass
Analyzed by 300.2 Elisa				
Mycotoxin	LOQ	Limit	Mass	Status
Aflatoxins	4.0	20.0	<LOQ	Pass
Ochratoxin A	2.0	20.0	<LOQ	Pass




Stacy Gardalen  
Quality Control

Kelly Zaugg  
Quality Control



4439 Polaris Ave  
Las Vegas, NV  
(702) 728-5180

www.dblabslv.com

This report is considered highly confidential and the sole property of the customer. DB Labs will not discuss any part of this study with personnel other than those authorized by the client. The results described in this report only apply to the samples analyzed. The reported result is based on a sample weight with the applicable moisture content for that sample. LOQ = Limit of Quantitation. Pesticide LOQ = Instrument Limit of Quantitation, NA = Not Analyzed. ND = Not Detected. NR = Not Reported. NT = Not Tested. PGR = Plant Growth Regulator. Unless otherwise stated all quality control samples performed within specifications established by the Laboratory. This product has been tested by DB Labs, LLC (MME# 61887736101164525768) using valid testing methodologies and a quality system as required by Nevada state law. Edibles are picked up prior to final packaging unless otherwise stated. Values reported relate only to the product tested. The uncertainty of measurement associated with the measurement result reported in this certificate is available from the organization upon request. DB Labs makes no claims as to the efficacy, safety or other risks associated with any detected or non-detected levels of any compounds reported herein. This Certificate shall not be reproduced except in full, without the written approval of DB Labs.



# Certificate of Analysis

Powered by Confident Cannabis

Naked Leaf LLC

Boulder, CO 80301  
nathan@nakedleaf.com  
(743) 226-5700  
Lic. #CBD

Sample: 1911DBL0282.11187

METRC Sample:  
Lot #: 1106440P

Strain: NA

Ordered: 11/20/2019; Sampled: 11/22/2019; Completed: 12/04/2019

## Naked leaf Tincture 450MG

Ingestible, Tincture



### Heavy Metals

Analyzed by 300.8 ICP/MS

Pass

Element	LOQ	Limit	Mass	Status
	PPB	PPB	PPB	
Arsenic	36	2000	<LOQ	Pass
Cadmium	36	820	<LOQ	Pass
Lead	36	1200	112	Pass
Mercury	36	400	<LOQ	Pass



Stacy Gardalen  
Quality Control

Kelly Zaugg  
Quality Control



4439 Polaris Ave  
Las Vegas, NV  
(702) 728-5180

www.dblabslv.com

This report is considered highly confidential and the sole property of the customer. DB Labs will not discuss any part of this study with personnel other than those authorized by the client. The results described in this report only apply to the samples analyzed. The reported result is based on a sample weight with the applicable moisture content for that sample. LOQ = Limit of Quantitation. Pesticide LOQ = Instrument Limit of Quantitation, NA = Not Analyzed. ND = Not Detected. NR = Not Reported. NT = Not Tested. PGR = Plant Growth Regulator. Unless otherwise stated all quality control samples performed within specifications established by the Laboratory. This product has been tested by DB Labs, LLC (MME# 61887736101164525768) using valid testing methodologies and a quality system as required by Nevada state law. Edibles are picked up prior to final packaging unless otherwise stated. Values reported relate only to the product tested. The uncertainty of measurement associated with the measurement result reported in this certificate is available from the organization upon request. DB Labs makes no claims as to the efficacy, safety or other risks associated with any detected or non-detected levels of any compounds reported herein. This Certificate shall not be reproduced except in full, without the written approval of DB Labs.